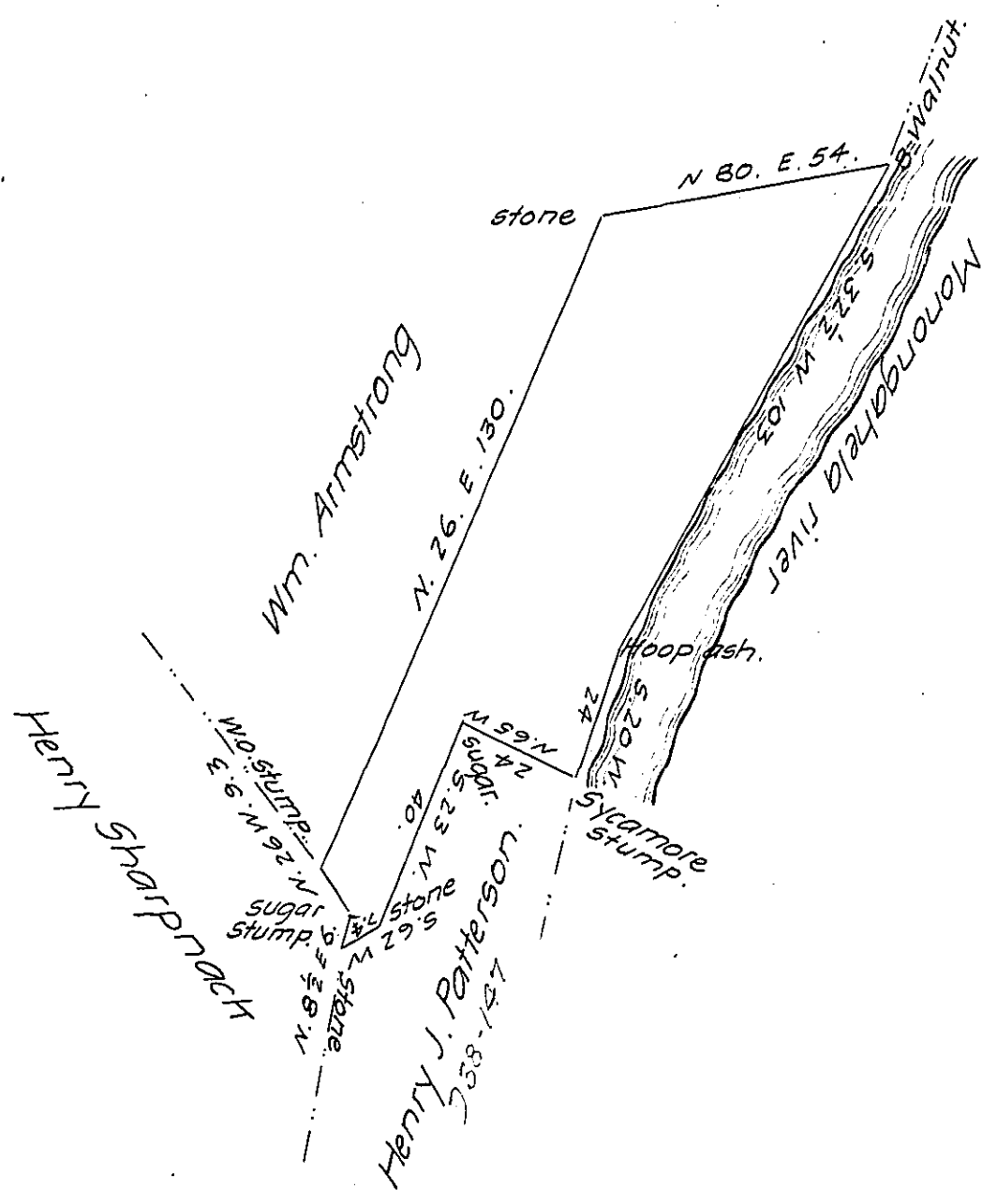


FORM No 1.



Surveyed April 29th 1839 in pursuance of a Warrant dated  
 the 14th of November 1838 granted to Henry J. Patterson, situate  
 in Cumberland township in the County of Greene, Containing 26  
 acres and 110 perches and the allowance of 6 percent.

R. Bristol D.S.

To John Taylor Esq  
 Surveyor General of Pa.

IN TESTIMONY that the above is a copy of the original remaining on file in  
 the Department of Internal Affairs of Pennsylvania, made  
 conformably to an Act of Assembly approved the 16th day of  
 February, 1833, I have hereunto set my Hand and caused  
 the Seal of said Department to be affixed at Harrisburg,  
 this eighth day of January 1908

*Henry Howell*  
 Secretary of Internal Affairs.